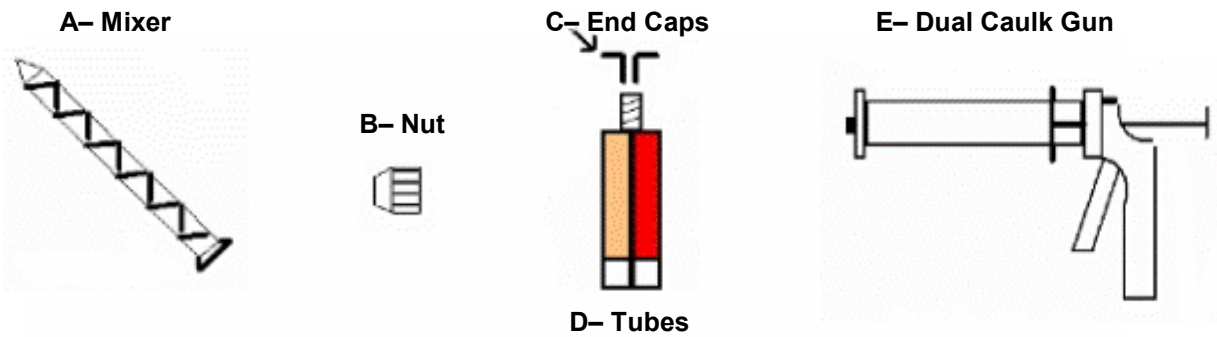


# AQUA SEAL Instructions for Use

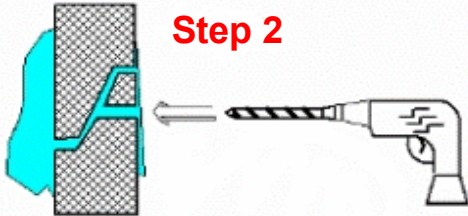


## Step 1



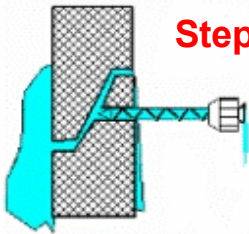
Slide B (Nut) over A (mixer- thread end first).

## Step 2



Drill 5/8" diameter hole to intersect leak path.

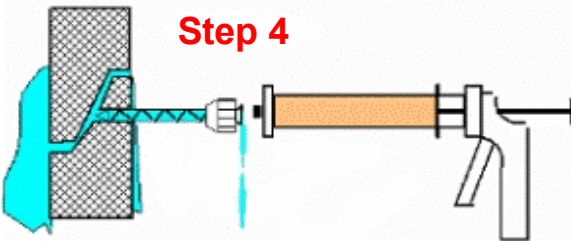
## Step 3



Place mixer into hole.

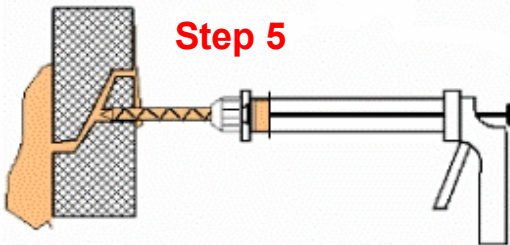
Prepare gun by pulling back plungers on E (dual caulk gun), insert D (tubes), while holding vertical, remove C (end caps) from threaded end of tubes.

## Step 4



Quickly align threads on D (tubes) with B (nut) and tighten to secure.

## Step 5



Pump gun vigorously to expel grout to refusal or seal. If there is a high velocity leak or if the grout is washing out, attach enclosed balloon onto end of mixer with tape (customer supplied) and insert mixer into hole and pump gun to expel the grout to refusal or seal.

**Tubes (D) must be 70° F or warmer. Place in hot water to heat**

Sealing Systems, Inc.

9350 County Road 19 ♦ Loretto, MN 55357 ♦ 763-478-2057 ♦ 800-478-2054 ♦ Fax 763-478-8868 ♦ [www.ssisealingsystems.com](http://www.ssisealingsystems.com)

# AQUA SEAL Tips for Use

## Tools Needed

- Hammer drill
- 5/8" masonry bit
- Hammer
- Flat tip screwdriver
- Knife
- Putty knife
- Tape
- Rags, oakum, or burlap



<b>Problem</b>	<b>Solution</b>
Slow Reaction	Tubes are cold. Immerse in hot water for 5 minutes.
Grout washes out	Water looks 'milky'. Attach enclosed balloon onto end of mixer with tape (customer supplied) and insert mixer into hole and pump gun to expel the grout to refusal or seal. Make sure output (water) is plugged with burlap, rags, or oakum. Force any of the above into cracks with a screwdriver and hammer. Move injection hole further away from output.
Quick Reaction	Tubes are too warm. Cool by placing tubes in 70° F. water.
Leaking Around Mixer Tube in Hole	Wrap a rag or burlap around the static mixer, tape to the mixer and then tap the mixer into the hole.
Difficult to Disengage Trigger Release	Tap trigger release with a small hammer then slide plunger back.

## Clean Up

- Snap mixers (15 minutes after injection) with a sharp downward motion
- Use a putty knife to scrape excess material from concrete.
- Dispose of waste foam with ordinary wood or plastic waste.

Manufactured in the USA  
**Sealing Systems, Inc.**  
9350 County Road 19  
Loretto, MN 55357  
800-478-2054  
[www.ssisealingsystems.com](http://www.ssisealingsystems.com)

