



S.S.I. INTERNAL UNI-BAND

Prevents Infiltration and Siltation in Sanitary Manholes and Catch Basins

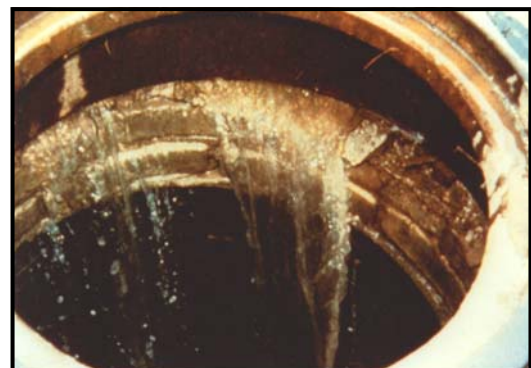
OUR SOLUTION



The **NEW S.S.I. INTERNAL UNI-BAND** is an inexpensive and permanent method of internally sealing the grade adjustment ring area of a manhole. The seal has foam backing to ensure a water tight seal over the rough/irregular surface of the structure, and stainless steel bands at the top and bottom with turnbuckles, allowing for precise adjustment to create a secure fit. To accommodate ground movement, **S.S.I. INTERNAL UNI-BAND'S** high quality Polyisoprene Rubber has 637% elongation. **S.S.I. INTERNAL UNI-BAND** saves taxpayer's money by not having to treat infiltrating water and by avoiding expensive repair and maintenance costs.

TO YOUR PROBLEM

**The New S.S.I.
Internal Uni-band**



Sealing Systems, Inc.

9350 County Road 19 ♦ Loretto, MN 55357 ♦ 763-478-2057 ♦ 800-478-2054 ♦ Fax 763-478-8868 ♦ www.infi-shield.com

S.S.I. INTERNAL UNI-BAND

APPLICATION STANDARDS & TECHNICAL DATA TEST RESULTS

| <u>PROPERTY</u> | <u>ASTM TEST METHOD</u> | <u>REQUIREMENTS</u> | <u>TEST RESULTS</u> |
|-----------------------------|----------------------------------|------------------------|---------------------|
| HARDNESS | D2240-05 | 45 | 45 |
| TENSILE | D412-06a | 1200 PSI/MIN | 1964 PSI |
| ELONGATION | D412-06a | 350 % MIN | 637 % |
| OZONE RESISTANCE | D1149-07 70 HRS @ 40° C & 50 mPA | | PASS |
| COMPRESSION SET | D395 22 HRS @ 70°C | 25% MAX | 16.8% |
| HEAT AGED HARDNESS | D865-99 96 HRS @ 70°C | No Requirements | +5 |
| HEAT AGED TENSILE | D865-99 96 HRS @ 70°C | No Requirements | +5 |
| HEAT AGED ELONGATION | D573 70 HRS @ 100°C | No Requirements | -8 |
| WATER RESISTANCE | D471-06 48 HRS @ 70°C | VOLUME CHANGE +10% MAX | 3.7% |
| LOW TEMPERATURE BRITTLENESS | D2137-05 (3 min. @ -40°C) | NO CRACK ON IMPACT | PASS |

SPECIFICATIONS: ASTM C923

PROPERTIES OF STAINLESS STEEL BANDS: 16 GAUGE 304 STAINLESS STEEL

PROPERTIES OF INFINITE EXPANSION DEVICE: 304 STAINLESS STEEL

FOAM SEAL: Closed Cell Polymer Foam (Neoprene/EPDM/SBR Sponge)



The **S.S.I. INTERNAL UNI-BAND** can be used on existing and new construction manholes or catch basins. A clean surface is necessary but no special tools are required for installation.



Sealing Systems, Inc.

9350 County Road 19. ♦ Loretto, MN 55357 ♦ 763-478-2057 ♦ 800-478-2054 ♦ Fax 763-478-8868 ♦ www.infi-shield.com